



# green · wood

MODULAR PROTOTYPE  
2,200 SF, 4 BED / 2.5 BATH

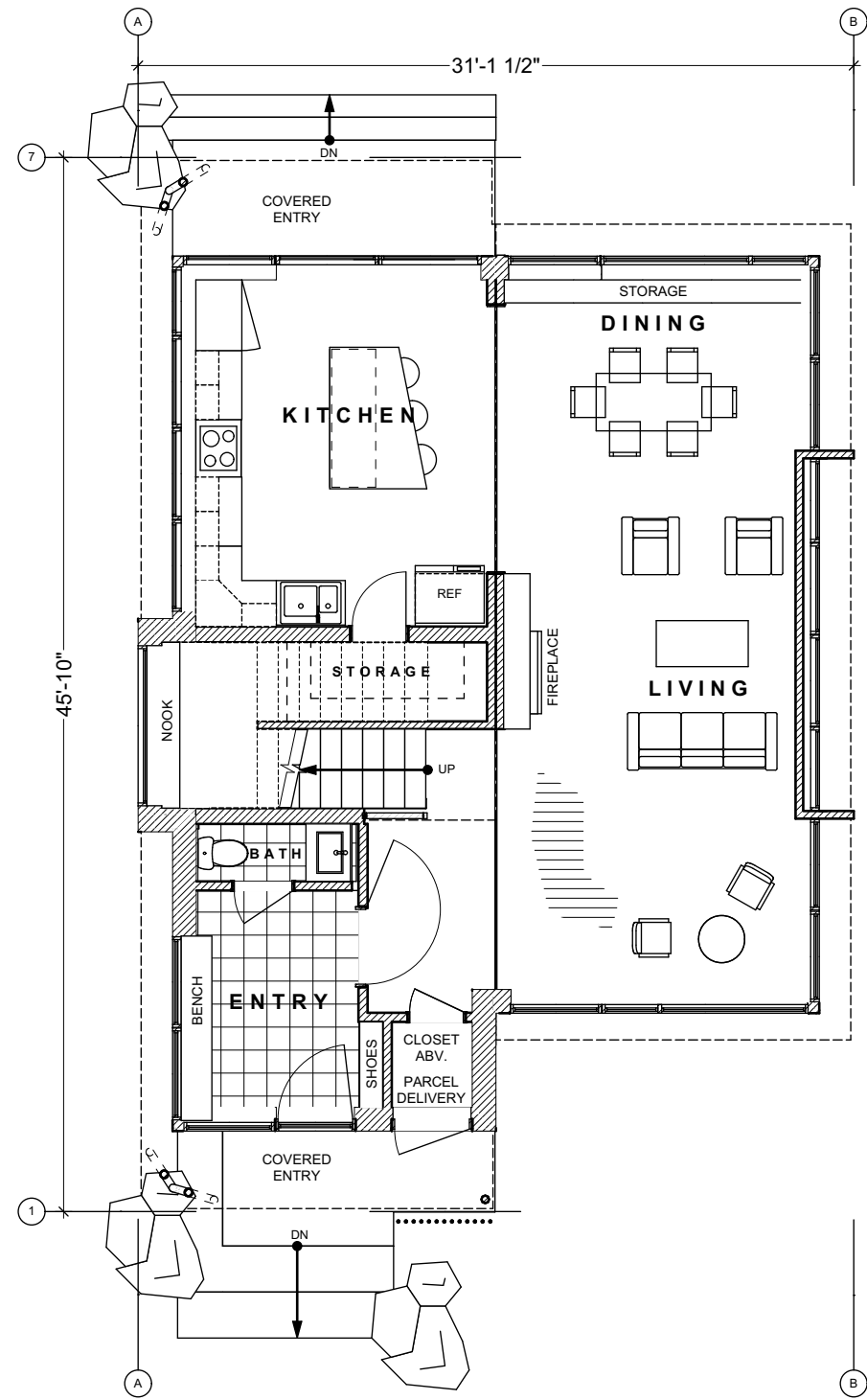
The Greenwood House is a modern American four-square home, designed for a compact lot in a walkable urban neighborhood. Main living spaces are on the ground floor with high ceilings and wide windows, while bedrooms are upstairs. The garage is below or behind, out of the way.

Like the original Sears Catalog homes from the 1930's, this home is designed for prefabrication. It can be set as four modules plus a roof panel pack. It utilizes beautiful cross laminated timber (CLT) panels and structural insulation panels (SIPS) to become a poem in modern construction that teaches the next generation how it was made.

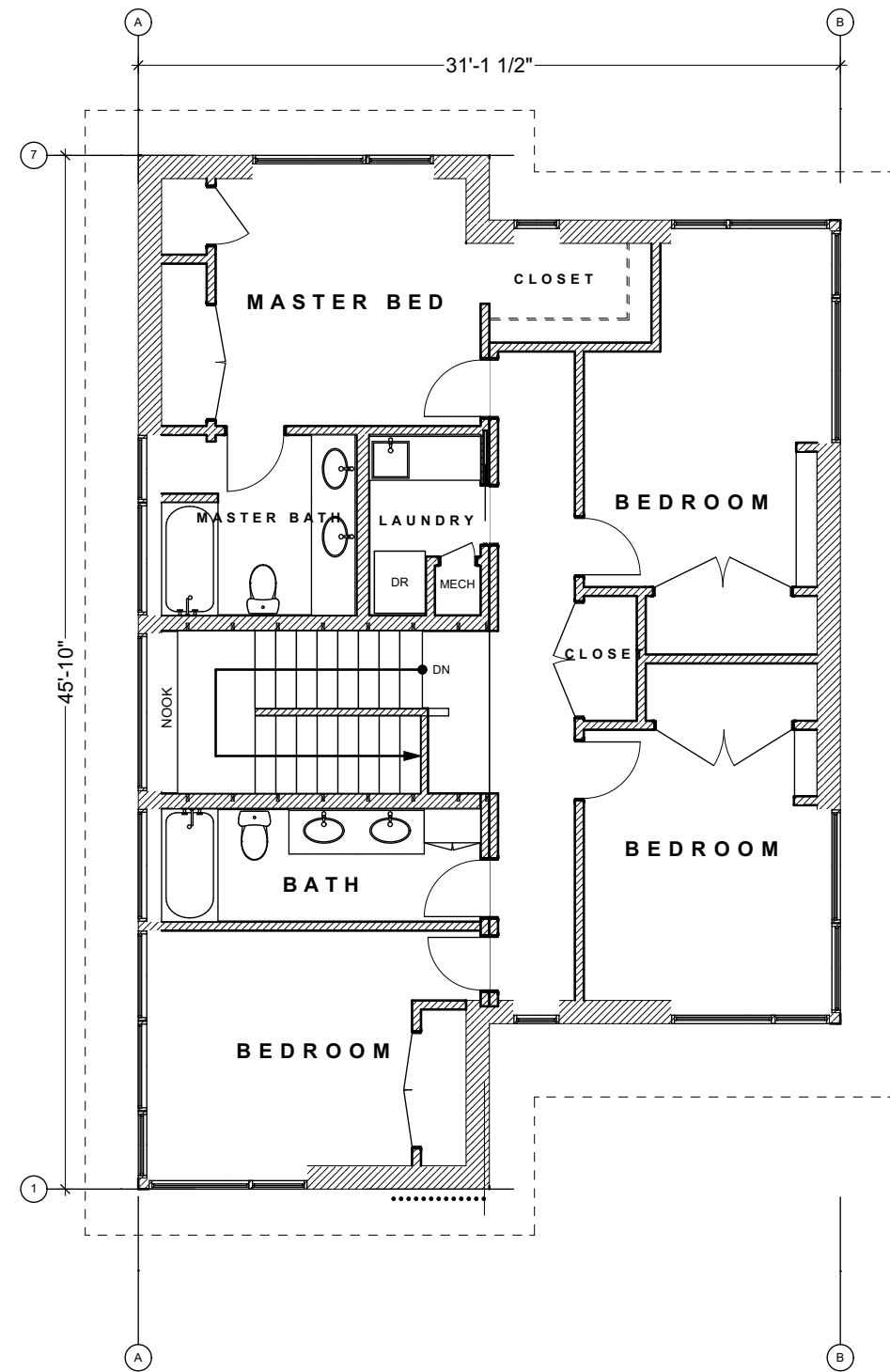


Windows by EuroClima

air · mod  
ARCHITECTURE PLLC



MAIN FLOOR



UPPER FLOOR



FRONT ELEVATION



RIGHT ELEVATION



REAR ELEVATION



LEFT ELEVATION